

2018 EDITION



petlas TRUCK - BUS TIRES

petlas

Headquarters - Factory

Petlas Tire Industry and Trade
Kırşehir - Kayseri Devlet Yolu Üzeri
Göhlisar Mevkii 7. km Kırşehir / TURKEY
T. +90 386 252 65 50 F.+90 386 252 65 70

Int. Sales & Marketing

Petlas Tire Industry and Trade
Kazım Karabekir Cd. Özcan Plaza
No.124 06060 Ankara / TURKEY
T. +90 312 309 30 30 F.+90 312 310 95 09

Petlas Tire USA

1111 E. Lincolnway STE 205
Cheyenne, WY 82001 USA

www.petlas.com

MADE IN TURKEY

petlas
TRACK OF TRUST

Premium Quality
TBR Tires

RANGE OF TBR TIRES

Long Haul



SH 100



SH 105



SH 110



RH 100



NZ 300



NH 100

Regional



SZ 300



RZ 300



NZ 305

Mixed Service (On - Off)



SC 700



RC 700



NCW 710

Off Road



RM 905

Urban



SU 500



SUW 550



RUW 550

DESCRIPTION

- * For load capacity on various speeds, and inflation figures, please consult your sales representative.
- ** Load capacity on standard speed and weight.
- Our company is entitled to make any change on any information in this catalogue, without further notice.
- This catalogue annuls all the previous catalogues.
- All figures are for reference; our company is not responsible for printing errors.

petlas
TRACK OF TRUST

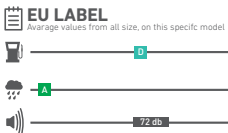


petlas

SH100



SH100 pattern is suitable to use on all axles on buses. For trucks, it can be used at steer or non-powered second axle pattern. Tread pattern geometry is optimized to deliver steering and grip on wet. Exceptional carcass structure provides good braking performance.

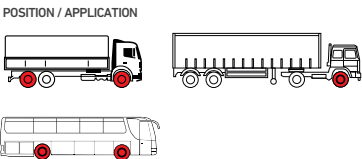


ALL SIZES

295/80 R22.5	152/148 M
315/80 R22.5	154/150 M (156/150L)

PATTERN PROPERTIES

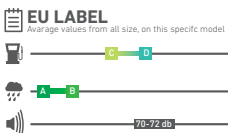
- It offers excellent grip and short braking distance with numerous sipes and z-shaped circumferential blocks.
- Optimised tread design resistant against irregular wear by balancing the pressure equally under load.
- Circumferential grooves drain water quickly and efficiently.
- Computer designed tire profile and block arrays offer safe and balanced driving.
- Special tread compound and robust structure provide longevity and economic fuel consumption.
- Excellent carcass structure is suitable for retreading many times.



SH105



SH105 is a steer pattern that is designed for trucks provides balanced drive, comfort and maneuverability on asphalt roads. Wide tread area and multi dimensional sipes enhance mileage performance and deliver high traction. Offers outstanding grip on wet and dry roads.

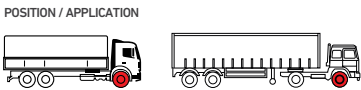


ALL SIZES

11 R22.5	148/145 M
12 R22.5	152/148 M

PATTERN PROPERTIES

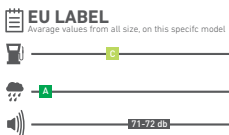
- Wide shoulder blocks provide lateral balance and enhance a smooth driving.
- Medium density sipes provide superior handling and short brake distance.
- Optimised tread design provides resistant against irregular wear by balancing the pressure equally under load.
- Circumferential grooves drain water quickly and efficiently.
- Indented side blocks provide safe brake distance even if the tire is worn.
- Excellent carcass structure is suitable for retreading many times.
- Special tread compound and robust structure provide longevity and economic low fuel consumption.



SH110 PROGREEN



SH110 Progreen is suitable for use on all axles on buses. For trucks it can be used at steer or non-powered second axle pattern. Special tread pattern design ensures even wear throughout the tyre's lifespan. Multiple grooves allow fast water discharge and provide exceptional wet handling.

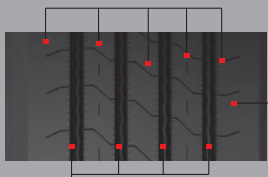


ALL SIZES

295/80 R22.5	152/148 M
315/80 R22.5	154/150 M (156/150 L)

PATTERN PROPERTIES

Circumferential ribs with numerous sipes enables exceptional grip.



Circumferential grooves drain water quickly and efficiently.

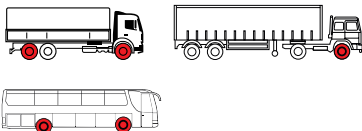
Computer designed tire pattern and five circumferential ribs ensure balance and comfort.

Optimized tread pattern maintains equal pressure distribution under load which enables resistance against irregular abrasion.



Exceptional carcass structure is appropriate for retreading.

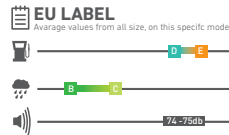
POSITION / APPLICATION



RH100



RH100 is a drive axle pattern designed for busses and trucks. Provides exceptional traction on asphalt roads. Block array decreases wear and increases tire's wet grip performance. Optimized tread profile provides resistance against irregular wear and heavy loads. Delivers safe riding and mileage in demanding winter conditions. Offers high retreadability.



ALL SIZES

285/70 R19.5 146/144 L (140/137 M)	295/80 R22.5 RH100 PLUS 152/148 M
11 R22.5 148/145 M	315/80 R22.5 154/150 M (156/150 L)
12 R22.5 152/148 M	315/70 R22.5 154/150 L (152/148 M)

PATTERN PROPERTIES

Optimised tread depth provides long life.

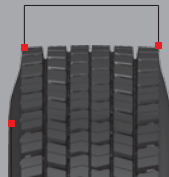


Reinforced interconnected blocks and carefully arranged block array provide balanced driving.

Block array structure provides high traction by generating numerous road holding points on asphalt in any kind of weather conditions.

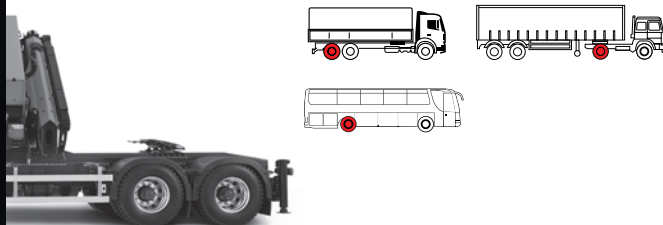
Circumferential and lateral grooves drain water quickly and efficiently.

Optimised tread design provides resistance against irregular wear by balancing the pressure equally under load.



Excellent carcass structure is suitable for retreading.

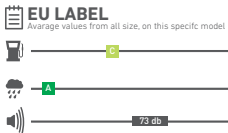
POSITION / APPLICATION



NZ300



NZ300 is a free rolling trailer tire. Its special pattern design enables exceptional wet grip. Optimised tread area provides resistance to irregular wear and strong carcass structure is resistant to cuts and stone retention. Its special compound promises longevity.

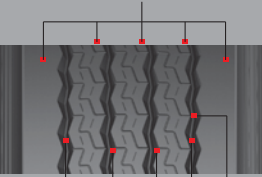


ALL SIZES

385/65 R22.5 160 K (158L)

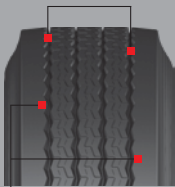
PATTERN PROPERTIES

Five circumferential ribs provide resistance against irregular wear.



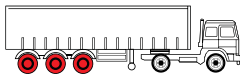
Circumferential grooves drain water quickly and efficiently.
Lateral sipes provide short braking distance.

Optimised tread design provides resistance against irregular wear by balancing the pressure equally under load.



High-strength carcass with completely steel frame provides long life and it is suitable for retreading.

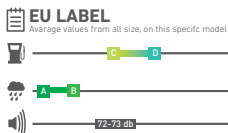
POSITION / APPLICATION



NH100 PROGREEN



NH100 Progreen is a fuel efficient free rolling trailer tire. Provides exceptional wet grip performance. Its strong carcass structure provides longevity and reduces irregular wear.



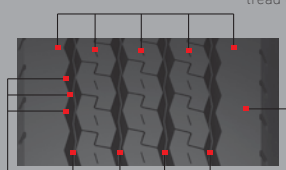
ALL SIZES

215/75 R17.5 135/133 J
235/75 R17.5 143/141 J (144/144 F)

245/70 R17.5 143/141 J (146/146 F)
245/70 R19.5 141/140 J

PATTERN PROPERTIES

Five circumferential ribs provide excellent lateral cornering stability.

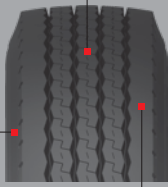


Z block structure provides excellent handling on wet surface.

Special angled circumferential grooves drain water quickly and efficiently and minimize pebble penetration inside grooves.

Best optimized pattern design provides low fuel consumption with a specially developed tread compound.

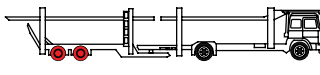
Use of position is for trailer. Not recommended for either front or traction axes.



All steel construction, specifically designed low profile structure meet all criteria for usage on roads and offers superior comfort.

Special belt construction, five circumferential blocks, full shoulder pattern design and optimized footprint provide resistance against irregular wear.

POSITION / APPLICATION



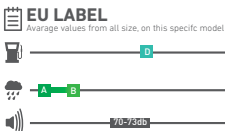
SZ300

M+S SUMMER WINTER

SZ300 pattern is designed for light commercial vehicles and suitable to use on all axles. Strong carcass structure provides high retreadability. Delivers balanced drive, perfect comfort, high maneuverability on asphalt roads. Provides exceptional grip on wet. The pattern design enhances mileage performance.



LCR



ALL SIZES

8.5 R17.5 121/120 L

225/75 R17.5 129/127 M

215/75 R17.5 126/124 M

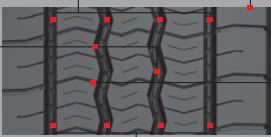
235/75 R17.5 132/130 M

PATTERN PROPERTIES

Stone rejecters inside circumferential grooves prevent pebble penetration inside grooves, protecting tread and carcass.

Unique pattern design and optimized block array provide high steering

It provides long life and resistance to irregular wear thanks to its special belt construction, optimized footprint and rigid shoulders.



Z block structure provides excellent traction and short brake distance.

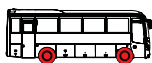
Circumferential grooves drain water quickly and efficiently.

Horizontal sipes between circumferential blocks increase traction shorten brake distance and provide grip on wet road.



All steel construction & specifically designed low profile structure meet all criteria for usage on highway and offers superior comfort.

POSITION / APPLICATION



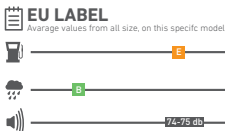
RZ300

M+S SUMMER WINTER

RZ300 is drive axle (traction) pattern designed for light commercial trucks and busses. Having 3PMSF and M+S, RZ300 provides exceptional grip and braking on snowy roads. Delivers high mileage thanks to its special compound.



LCR



ALL SIZES

8.5 R17.5 121/120 L

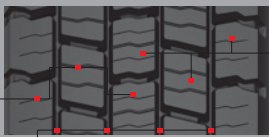
225/75 R17.5 129/127 M

215/75 R17.5 126/124 M

235/75 R17.5 132/130 M

PATTERN PROPERTIES

The sipes between the blocks offer enhanced traction, shortened brake distance, excellent grip on wet surface.



Circumferential and lateral grooves drain water quickly and efficiently.

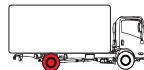
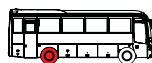
It provides high traction and excellent grip with its aggressive block pattern structure. Interconnected blocks increase usage life.

Optimised tread depth provides long life.



All steel construction & specifically designed low profile structure meet all criteria for usage on highway and offers superior comfort.

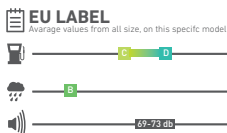
POSITION / APPLICATION



NZ305



NZ305 is a free rolling trailer tire. Special tread desing provides exceptional grip on wet and good mileage performance.



ALL SIZES

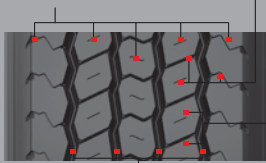
215/75 R17.5 135/133 J
235/75 R17.5 143/141 J(144/144 F)

385/65 R22.5 160 K(158L)

PATTERN PROPERTIES

Five circumferential ribs provide resistance against irregular wear.

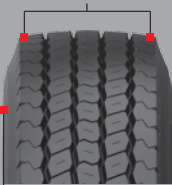
Lateral sipes provide short braking distance.



Circumferential grooves drain water quickly and efficiently.

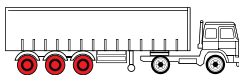
Blocked structure pattern provides superior handling on wet and snowy surfaces.

Optimised tread design provides resistance against irregular wear by balancing the pressure equally under load.



High-strength carcass with completely steel frame provides long life and can be retread several times.

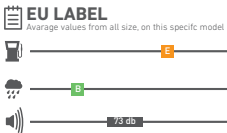
POSITION / APPLICATION



SC700



SC700 is an all position pattern for mixed service (On and Off road) use. Strong carcass structure delivers exceptional resistance to cutting and chipping. Wide footprint helps enhance mileage; improves handling and stability. Suitable for retreading multiple times.



ALL SIZES

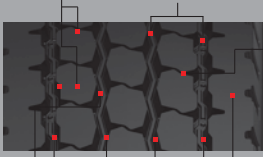
12 R22.5 152/148 K
13 R22.5 156/150 K

315/80 R22.5 156/150 K(154/150L)

PATTERN PROPERTIES

Different sizes of block design provide reduced pattern noise.

Stone rejecters located among blocks minimize pebble penetration inside grooves.



Offers superior handling and braking performance with Zigzag block structure on roads and construction sites.

Four Circumferential grooves drain water/mud/snow quickly and efficiently.

Wide and full shoulder structure increase lateral balance and enhance damage resistance

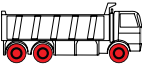
Optimised tread design resistance against irregular wear by balancing pressure equally under load.



Excellent carcass structure is suitable for retreading many times.

Special tread compound provides resistance to wears, cuts and breaks.

POSITION / APPLICATION



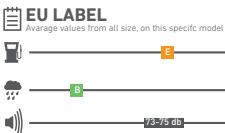
RC700



RC700 is a drive axle pattern suitable for mixed service. Its special tread compound provides resistance to tears. Delivers high mileage and comfort on asphalt roads. The directional tread design offers exceptional traction; effective soil discharge and drainage performance.



MIXED SERVICE



ALL SIZES

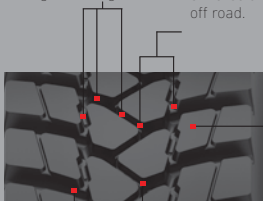
12 R22.5	152/148 K
315/80 R22.5	156/150 K (154/150L)

PATTERN PROPERTIES

Spall ejectors located among the block arrays reduce the rock crushing throughout the grooves.

Reinforced block arrays ensure steady driving on the motorway and enhance of the blocks on off road.

Thanks to optimized tread profile, tire distribute the pressure equal under heavyload and so becomes durable against the irregular wearout



Optimized groove design enables excellent water/mud/snow discharge.

Directional block design maintains the steady driving on the motorway and also provides maximum grip and traction on the wet and mudier ground.

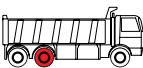


Ultra durable carcass structure allows to retread.

Exclusive tread compound provides endurance against wearout, cuts and splits.



POSITION / APPLICATION



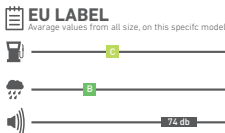
NCW710



NCW710 is free rolling trailer tire suitable for mixed service (On and Off road) applications. Special compound provides exceptional resistance against wear and tears, and offers longevity.



MIXED SERVICE



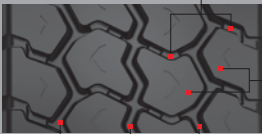
ALL SIZES

385/65 R22.5	160K(158L)
--------------	------------

PATTERN PROPERTIES

Reinforced interconnected blocks provide balanced and comfortable driving and enhance resistance in site conditions.

Optimised tread design resistance against irregular wear by balancing pressure equally under load.



Optimized grooves drain water/mud/snow quickly and efficiently.

Optimised tread pattern which consists of wide channels and big blocks provides superior handling and longevity on wet on muddy surfaces.



Excellent carcass structure is suitable for retreading many times.

Special tread compound provides resistance to wears, cuts and breaks.



POSITION / APPLICATION



RM905

M+S SUMMER WINTER

RM905 is an all position pattern that is suitable for off road service. Robust tread blocks enhance exceptional resistance to tears and offer outstanding traction in tough road conditions. Provides excellent self cleaning feature thanks to its special lug design.



- ALL SIZES
- 13 R22.5 154/150 K (156/150 G)

PATTERN PROPERTIES

Reinforced block arrays provide steady driving performance and enhance the wearout endurance of the blocks.



Wide and angular grooves reduce rock squeezing among.

Robust block arrays provides ultra traction.

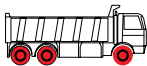


Ultra durable carcass structure allows to retread.

Through optimized tread profile, full/empty rate and tread depth; tyre provides steady driving off the road and high mileage.

Exclusive compound provides endurance against wearout, cuts, splits and laceration.

POSITION / APPLICATION



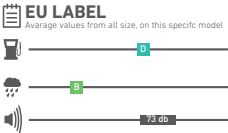
SU500

M+S SUMMER WINTER

SU500 is a all season bus tire that is suitable for all positions. Robust compound provide exceptional service for innercity narrow streets, curbs, stop-and-go traffic. Delivers exceptional mileage performance. Offers high retreadability thanks to its strong carcass structure.

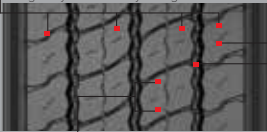


- 275/70 R22.5 150/145J (152/148E)



PATTERN PROPERTIES

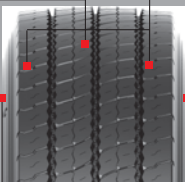
Specially developed tread composition and four wide circumferential rib which seperated each other with sipes provides ultimate performance and longevity in intercity usage.



Different size block array reduces tread noise level.

Z-shaped channels and thin sipes located on tread provide safety and traction on wet surfaces.

High traction under low temperatures and safety thanks to its special tread composition.



To control the levels of abrasion via abrasion of the friction indicators located on sidewalls.

Reinforced sidewalls against to pavement friction damages happen occur approaching bus stops.

Optimized tread width and tread depth, longevity and resistance to unstable abrasion.

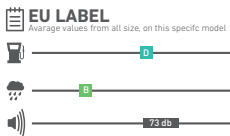
POSITION / APPLICATION



SUW550



SUW550 is a winter bus tire that is suitable to use as all position tire on innercity vehicles. Robust compound provides exceptional service for innercity narrow streets, curbs, stop-and-go traffic. Offers high retreadability thanks to its strong carcass structure. 3PMSF and M+S markings on the tire ensure better grip and braking on snow. Wide tread design enhances mileage performance of the tire.

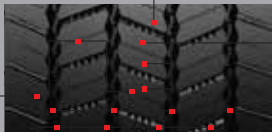


ALL SIZES

275/70 R22.5 150/145J (152/148E)

PATTERN PROPERTIES

Z-shaped capillary sipes located on circumferential rib construction provides ultimate traction on snowy surfaces and safety, also short break distance.



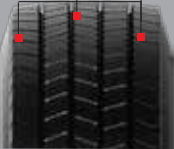
With five circumferential ribs provide safety, balanced driving and lateral resistance.

Specially formulated tread composition and deep blocks provide ultimate performance and longevity abrasion resistance during frequent stops and goes.

Effective water/mud/snow discharge thanks to four circumferential grooves.

Different size block array reduces tread noise level.

To control the levels of abrasion via friction indicators located on sidewalls.



Reinforced sidewalls against to pavement friction damages happen occur approaching bus stops.

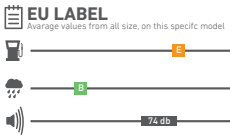
Optimized tread width and tread depth, longevity and resistance to unstable abrasion.

High traction under low temperatures and safety thanks to its special tread composition.

RUW550



Suitable to use as drive axle pattern, RUW550 is designed for innercity vehicles especially for buses. Having 3PMSF and M+S markings on the tire ensure better grip and braking on snow. Wide tread design enhances mileage performance of the tire.

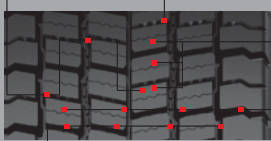


ALL SIZES

275/70 R22.5 150/145J (152/148E)

PATTERN PROPERTIES

Z-shaped capillary sipes located on circumferential rib construction provides ultimate traction on snowy surfaces and safety, also short break distance.



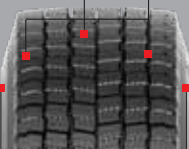
With five circumferential ribs provide safety, balanced driving and lateral resistance.

Specially formulated tread composition and deep blocks provide ultimate performance and longevity abrasion resistance during frequent stops and goes.

Effective water/mud/snow discharge thanks to four circumferential grooves.

Different size block array reduces tread noise level.

To control the levels of abrasion via friction indicators located on sidewalls.



Reinforced sidewalls against to pavement friction damages happen occur approaching bus stops.

Optimized tread width and tread depth, longevity and resistance to unstable abrasion.

High traction under low temperatures and safety thanks to its special tread composition.



POSITION / APPLICATION



POSITION / APPLICATION





Petlas Truck and Bus Tires are characterized by quality workmanship, leading edge technology, unique tread designs and excellent performance offering perfect mix of quality and value.

Our success depends on exceeding the expectations of our customers and standing behind everything we do.

Our aim is to build long term relationships with our customers by providing excellent service, quality and delivering our promises.

* Due to developments in tire technology, contents of this brochure is subject to change without any prior notice

* Our company is not responsible for typing errors

